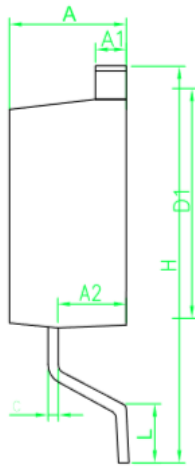
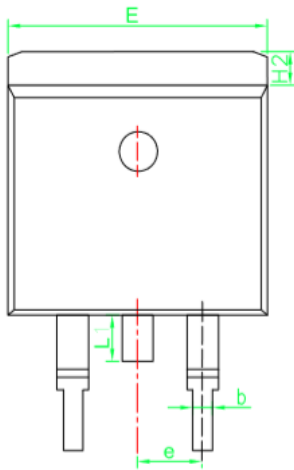


**MECHANICAL INFORMATION**  
**MBR20200CG**

**Package Outline Dimension:**

**TO-263 (E type)**



D <sup>2</sup> PAK (E type)		
DIM	MIN	MAX
A	4.30	4.80
A1	1.12	1.42
A2	2.54	2.84
b	0.67	1.00
c	0.29	0.52
D1	8.40	9.00
E	9.80	10.46
e	2.54 BSC	
H	14.00	16.00
H2	1.12	1.45
L	1.50	3.10
L1	1.45	1.70
All Dimensions in millimeter		

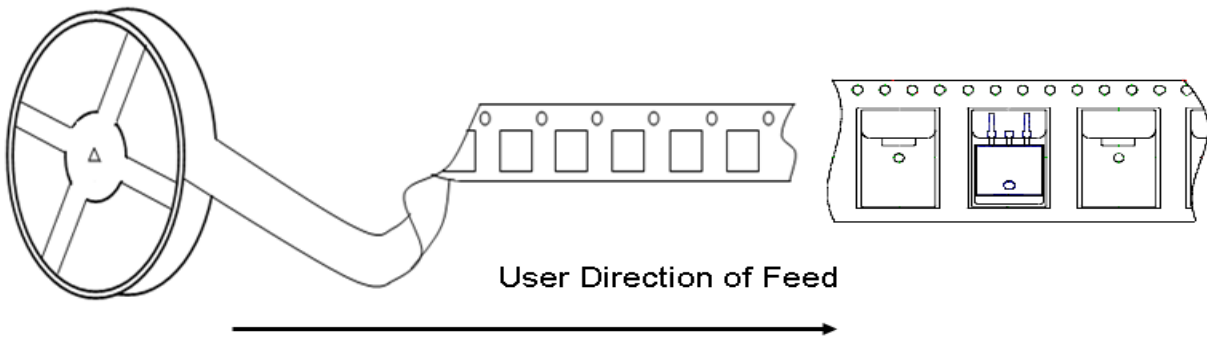
**Packaging Information:**

DEVICE	Units / Tape	Tapes / Inner Box	Box size (mm)	Units / Inner Box	Inner Box / Carton Box	Carton size (mm)	Units / Carton Box
TO-263 (E type)	800	1	350X338X50	800	5	385X358X303	4K

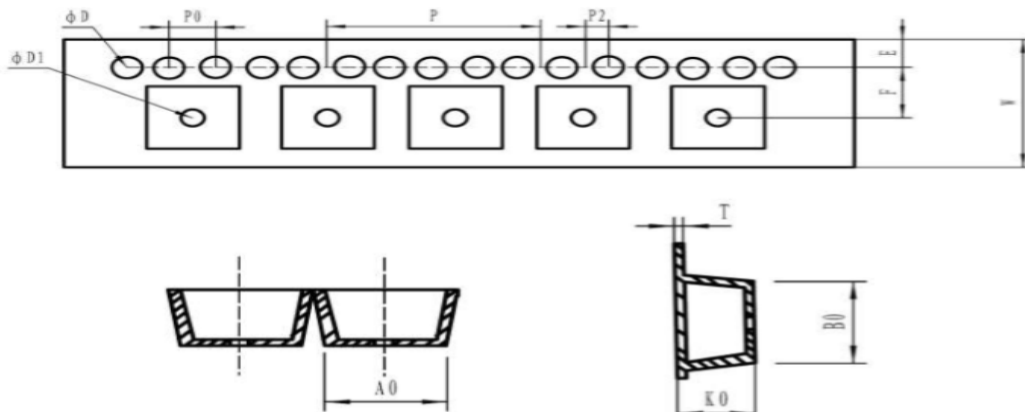
**PACKAGING INFORMATION**  
**MBR20200CG**

**Embossed Carrier Dimensions Information**

Polar Units



**TO – 263 (E type)**



TAPE SIZE	D	D1	P0	P	P2	E	UNIT
24mm	$1.5+0.2/-0.1$	$1.5+0.2/-0.1$	$4.0\pm0.2$	$16.0\pm0.2$	$2.0\pm0.2$	$1.75\pm0.2$	mm
	A0	T	K0	B0	F	W	
	$10.9\pm0.2$	$0.35\pm0.05$	$4.9\pm0.2$	$16.0\pm0.2$	$11.5\pm0.2$	$24.0\pm0.3$	