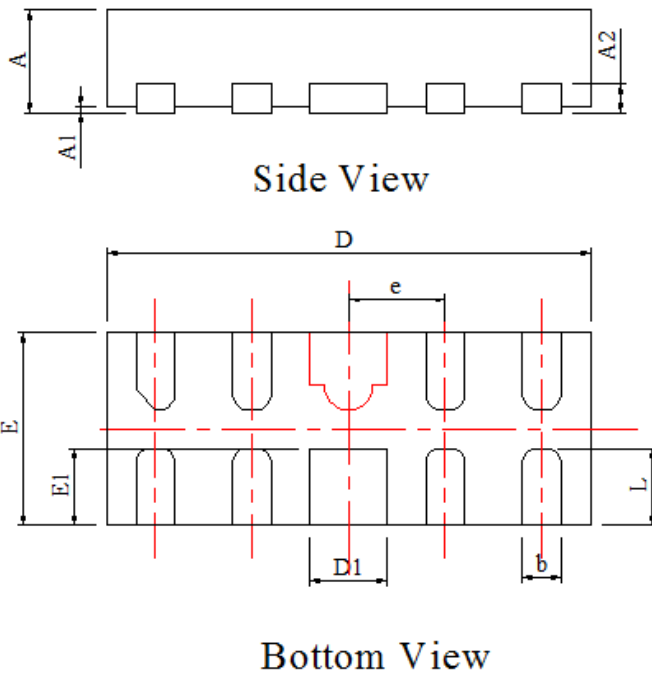


Packaging Information

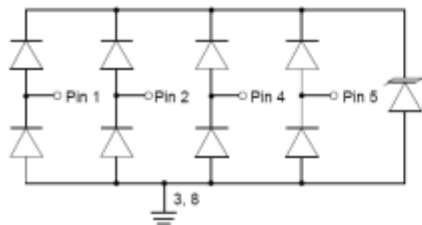
Mechanical Dimensions
For Discrete

SLP2510P8

Unit: mm



SLP2510P8		
DIM.	MIN.	MAX.
A	0.495	0.555
A1	0.00	0.05
A2	0.152REF	
D	2.464	2.55
E	0.964	1.05
D1	0.35	0.45
E1	0.35	0.45
b	0.17	0.23
e	0.50BSC	
L	0.35	0.45
All Dimensions in millimetre		



PIN ASSIGNMENT	
1,2,4,5	Input lines
6,7,9,10	NC
3,8	Ground