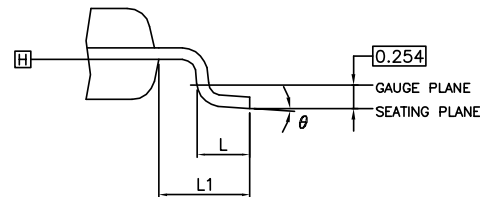


VARIATIONS (ALL DIMENSIONS SHOWN IN MM)

SYMBOLS	MIN.	NOM.	MAX.
A	---	---	1.20
A1	0.05	---	0.15
A2	0.95	1.00	1.05
b	0.17	0.22	0.27
c	0.09	0.127	0.16
D	16.00 BSC		
D1	14.00 BSC		
E	16.00 BSC		
E1	14.00 BSC		
e	0.50 BSC		
L	0.45	0.58	0.75
L1	1.00 REF		
θ	0°	3.5°	7°



Notes:

1. JEDEC : MS-026 AED
2. Datum plane [H] is located at the bottom of the mold parting line coincident with where the lead exits the body.
3. Dimensions D1 and E1 do not include mold protrusion. Allowable protrusion is 0.25 mm per side. Dimensions D1 and E1 do include mold mismatch and are determined at datum plane [H].
4. Dimension b does not include dambar protrusion.



DATE: 09/22/11

DESCRIPTION: 100-contact, Thin Quad Flat Package (TQFP)

PACKAGE CODE: FA100

DOCUMENT CONTROL #: PD-2107

REVISION: --