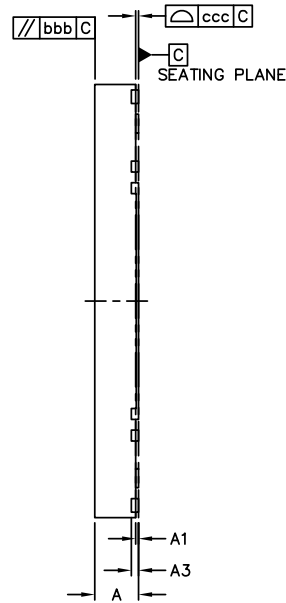
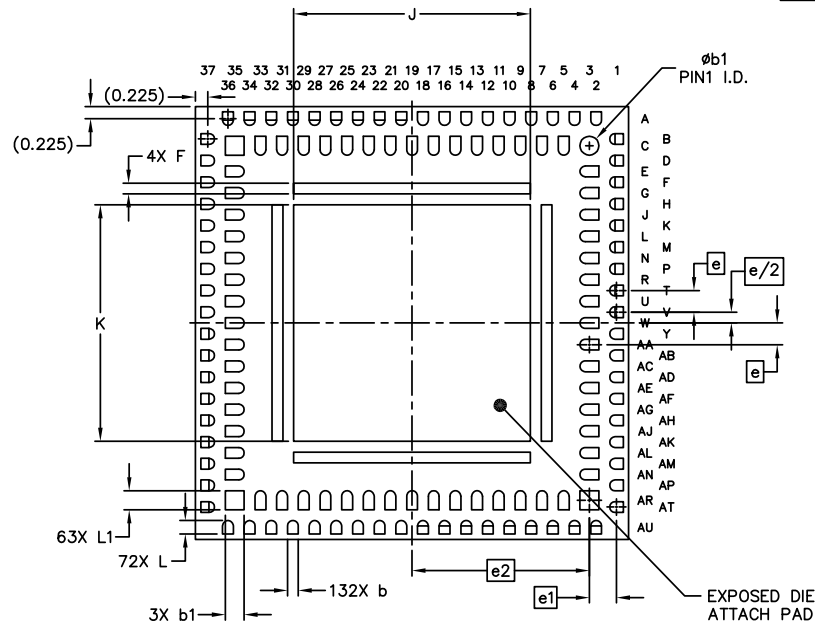


TOP VIEW



SECTION C-C

	SYMBOL	MIN	NOM	MAX	
TOTAL THICKNESS	A	---	---	0.85	
STAND OFF	A1	0.02	0.05	0.08	
L/F THICKNESS	A3	0.12	0.13	0.14	
LEAD WIDTH	b	0.15	0.20	0.25	
	b1	0.30	0.35	0.40	
BODY SIZE	X	D	7.90	8.00	8.10
	Y	E	7.90	8.00	8.10
LEAD PITCH	e	0.40 BSC			
	e1	0.50 BSC			
	e2	3.275 BSC			
EP SIZE	X	J	4.27	4.37	4.47
	Y	K	4.27	4.37	4.47
LEAD LENGTH	L	0.20	0.25	0.30	
	L1	0.30	0.35	0.40	
RING WIDTH	F	0.15	0.20	0.25	
MOLD FLATNESS	bbb	0.20			
COPLANARITY	ccc	0.05			



BOTTOM VIEW

NOTES

- 1.0 DIMENSIONS IN MILLIMETERS. ANGLES IN DEGREES.
- 2.0 COPLANARITY APPLIES TO LEADS, CORNER LEADS AND DIE ATTACH PAD.



DATE: 05/20/11

DESCRIPTION: 136-contact, Advanced Quad Flat No-Lead (aQFN)

PACKAGE CODE: ZX (ZX136)

DOCUMENT CONTROL #: PD-2098

REVISION: --