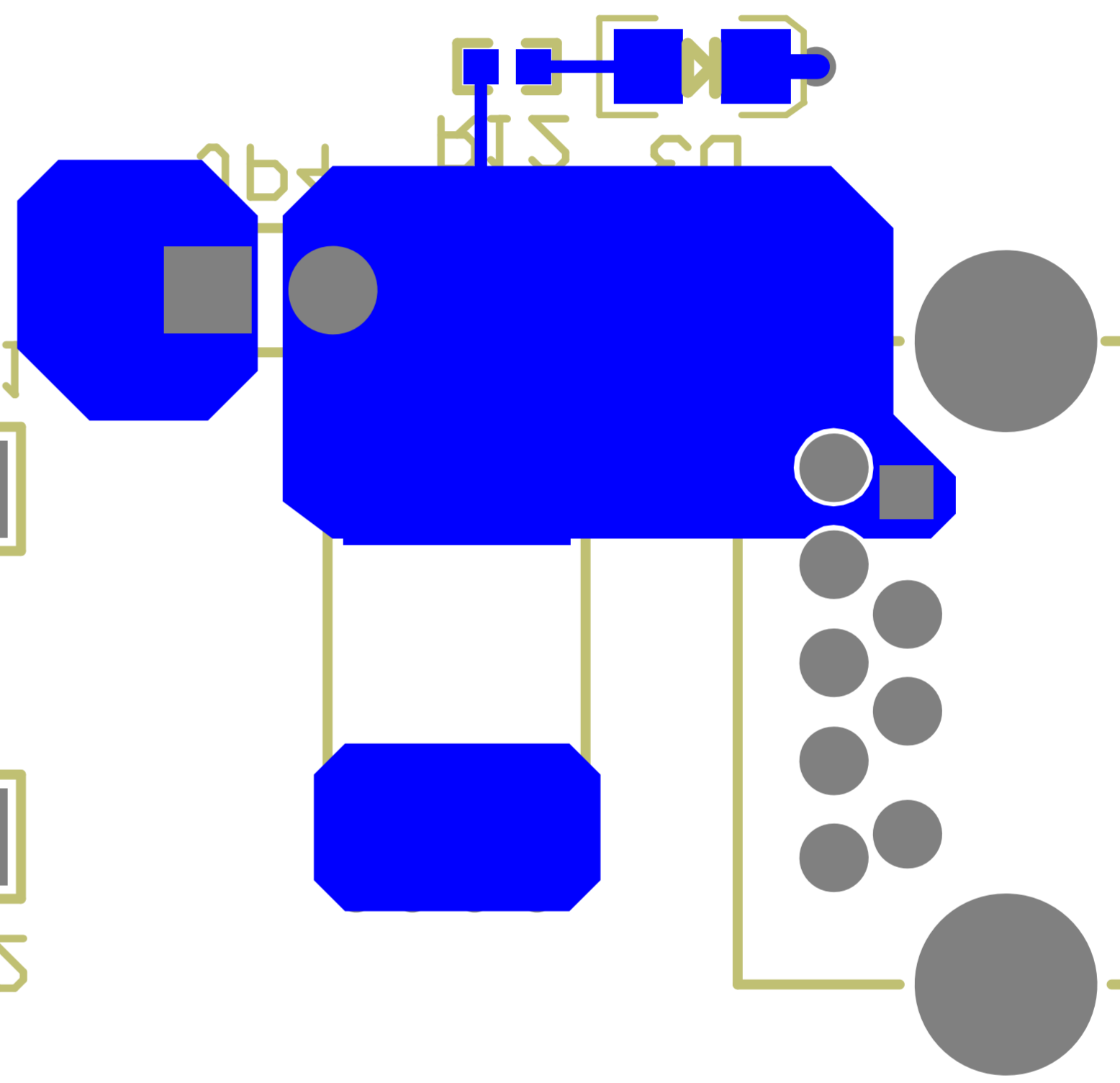




1b1 + END

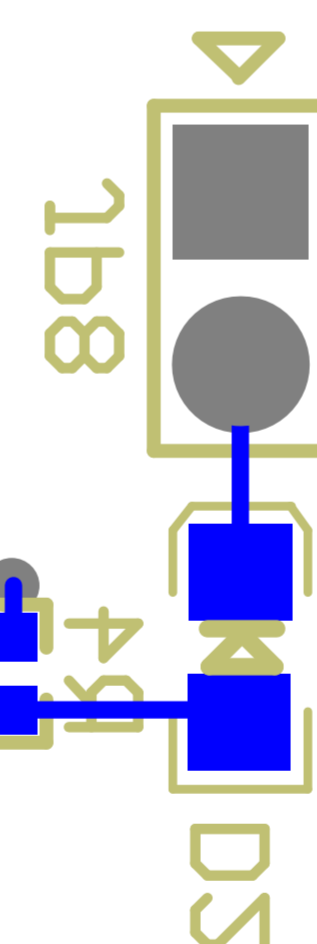


1b1



- 2\N: [redacted]
- BEU: A D916: 5013.15.5
- p\N: pI2U2B52+4\A\_52+e\A U2B 2M EUB
- pI2U2B52+eW5HE
- pI2U2B52+eSHE
- pI2U2B52+4A5HE
- pI2U2B52+4SHE

#2UTAT2



1b8

1b2

1b2 END



#1UAT1

1b1

DI

1b3

ITIM\_SETD

CLT3D

CLT5D

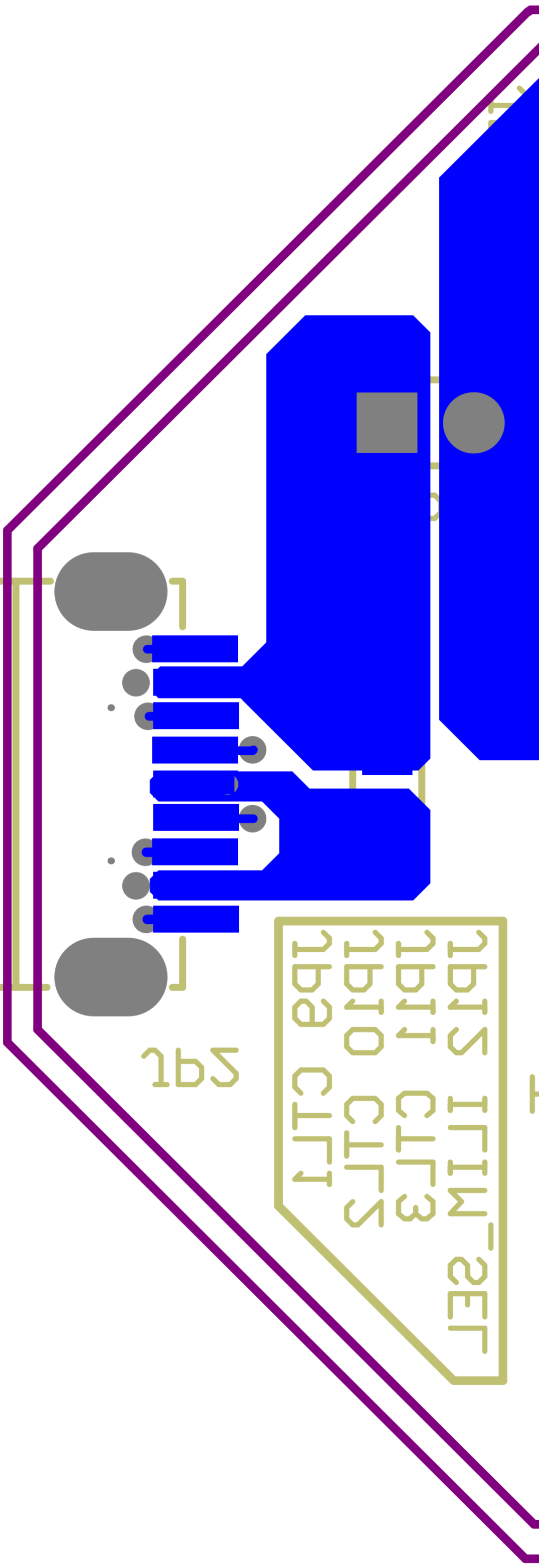
CLT1D

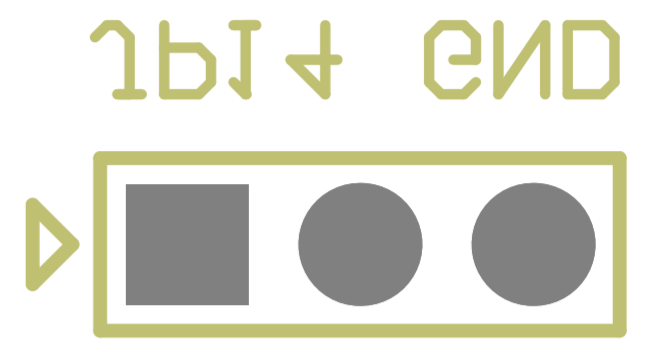
1b13

END  
EN  
HIGH

1b15 ITIM\_SET  
1b11 CLT3  
1b10 CLT5  
1b9 CLT1

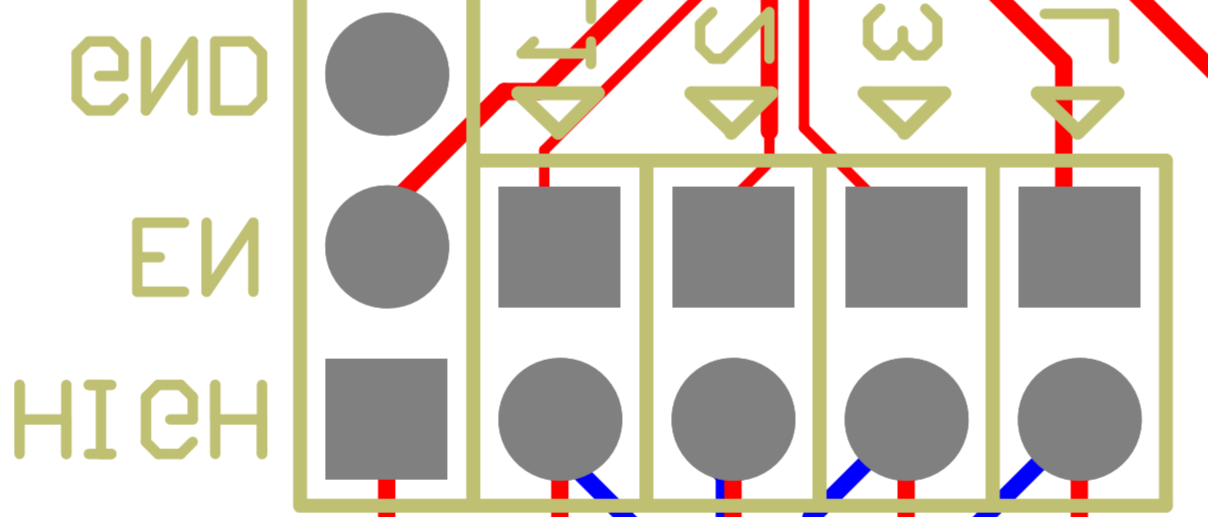
1b5





1b1

2\N: [redacted]  
 REF: A D916: 2013.12.5  
 P\N: pI2U2B22+A\_22+A\_22+A\_22B 2M EVB  
 ■ pI2U2B22+eWzHE  
 ■ pI2U2B22+eSHE  
 ■ pI2U2B22+AWzHE  
 ■ pI2U2B22+ASHE



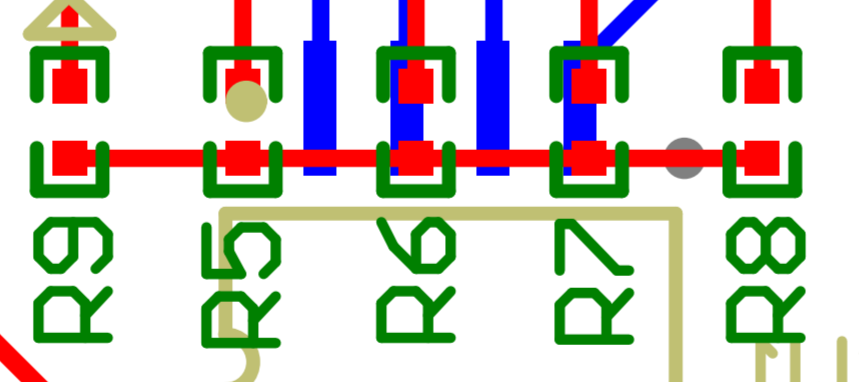
1b2 + 2N

1b3

1b5



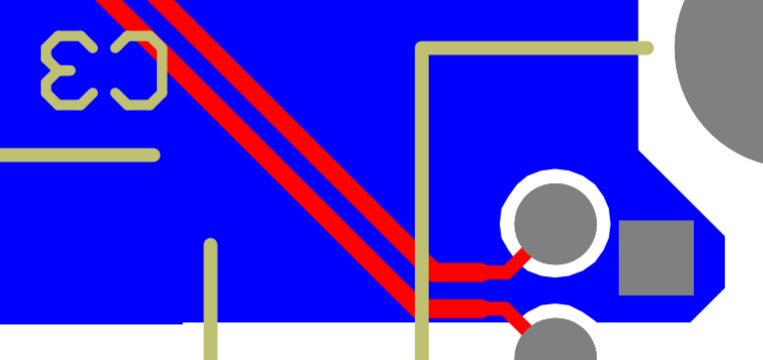
END  
EN  
HIGH



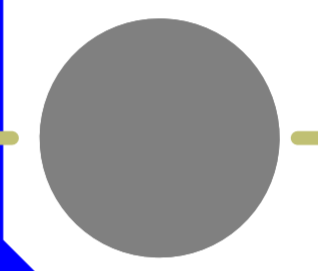
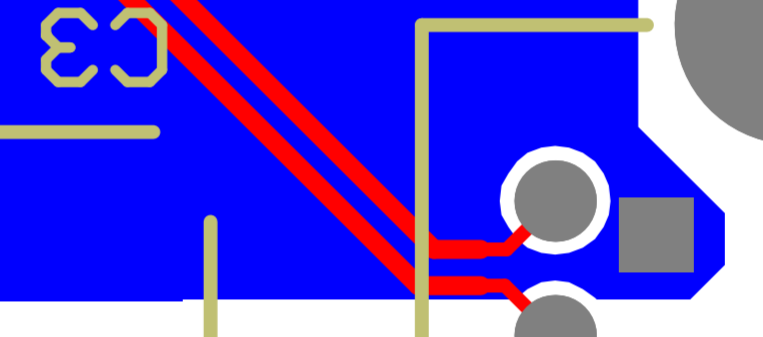
1b6



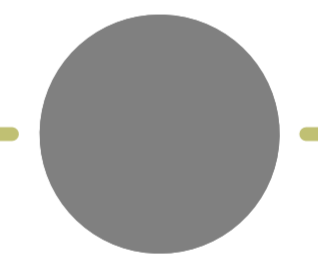
1b7



1b4



1b1



1b1

