
Evaluation Board (AL9910EV12)

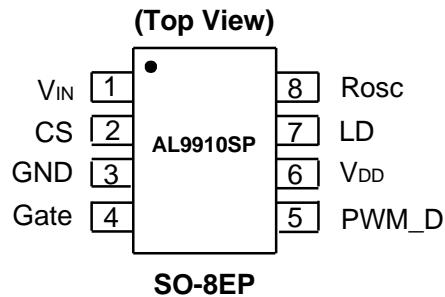


Figure 1: Top-View Evaluation Board

Features

- Non-Dimmable
- Selectable 2W-5W output power
- Active PFC with power factor >0.9
- High Efficiency
- No electrolytic capacitor
- Long operating life
- Typical Applications: Retrofit B10, E17, E14 LED Light Bulbs

AL9910 Pin Assignment



AL9910 Pin Description

Pin Name	Pin Number	Descriptions
V _{IN}	1	Input voltage
CS	2	Senses LED string current
GND	3	Device ground
Gate	4	Drives the gate of the external MOSFET
PWM_D	5	Low Frequency PWM Dimming pin, also Enable input. Internal 100kΩ pull-down to GND
V _{DD}	6	Internally regulated supply voltage. 7.5V nominal for AL9910. Can supply up to 1 mA for external circuitry. A sufficient storage capacitor is used to provide storage when the rectified AC input is near the zero crossings
LD	7	Linear Dimming by changing the current limit threshold at current sense comparator
R _{OSC}	8	Oscillator control. A resistor connected between this pin and ground sets the PWM frequency.

Specifications

Parameter	Units	Value
AC Input Voltage	V _{AC}	85 – 277
ROHS Compliance	NA	Yes

I/O Terminals

Connection Instructions:

AC1+ Input: Red – Hot

AC2- Input: Black - Neutral

DC LED1+ Output: LED1+ (Red)

DC LED2- Output: LED2- (Black)

230V_{AC} Test conditions:

AC Input Voltage: 230V_{AC}, 60Hz

LED Output Voltage: 80V_{DC} (27 LEDs)

LED Output Current: 65mA_{DC}

Output Power: 5W

Quick Start Guide

- 1) Connect +230V_{AC} AC power supply between AC1+ and AC2- headers.
- 2) Connect external 80V_{DC} LEDs to the output headers between LED1+ and LED2-.
- 3) Turn on the AC power supply.

AL9910EV12 Eval Boards in B10/E17 Sockets

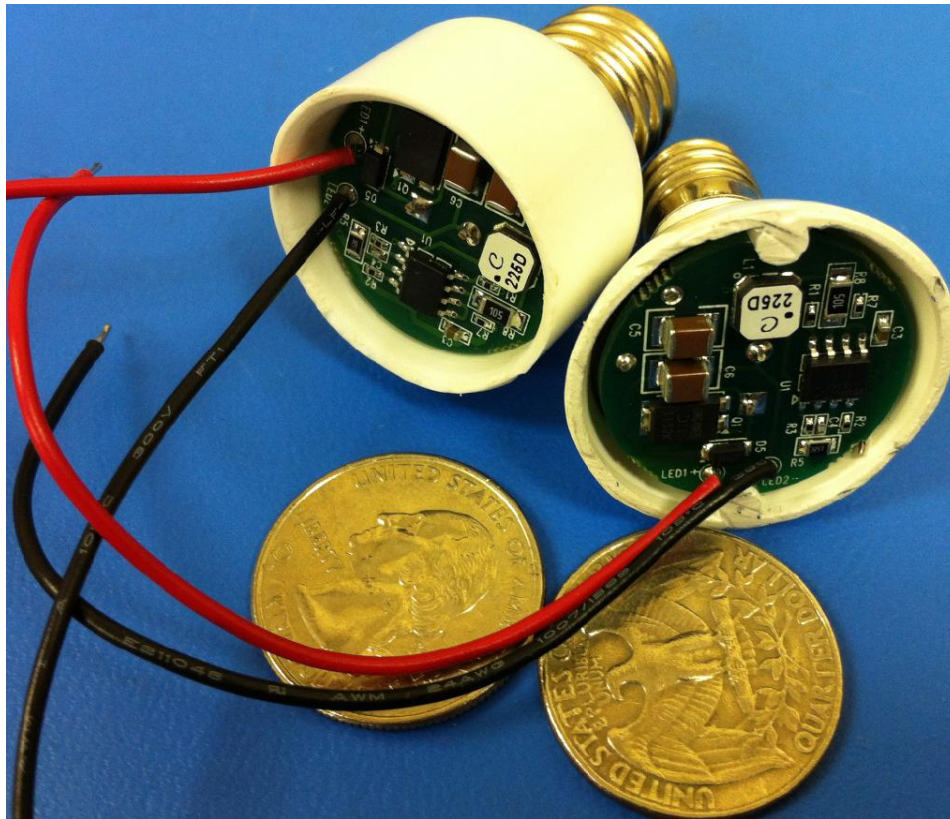
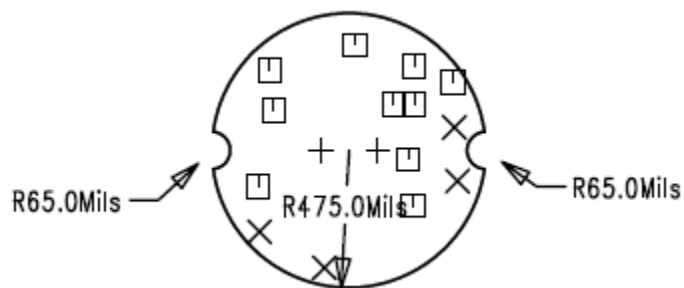


Figure 2: B10/E17 Sockets

Board Dimension

Board Dimension (components included):
DxH (in mm) = 24.13mm x 15mm



PCB Board Layout

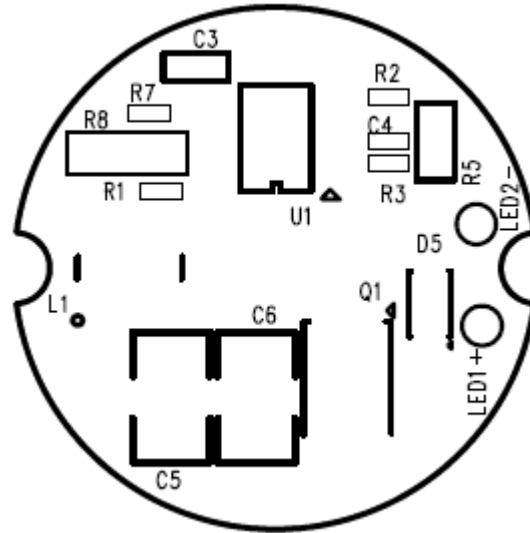


Figure 3: Top PCB Layout

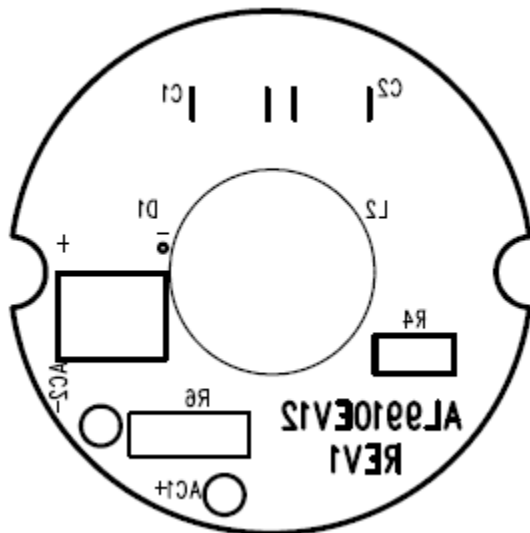


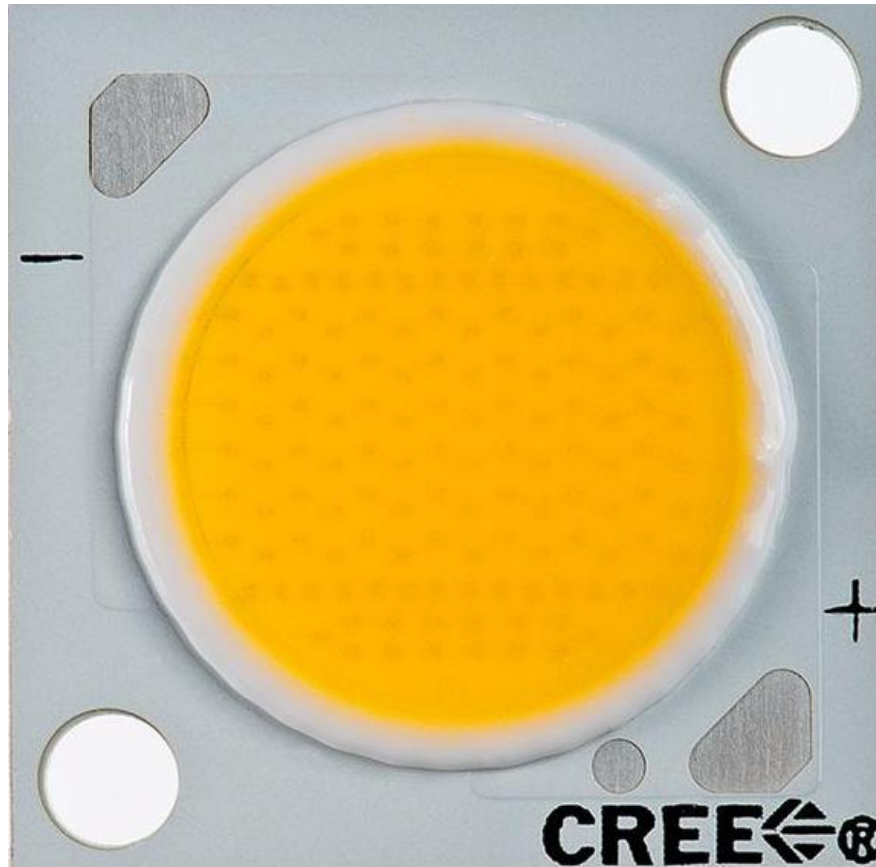
Figure 4: Bottom PCB Layout

LED Output

LED P/N: Cree XLamp CXA2011 LED (+40V per each)

LED Testing applications: 2 CXA2011 LEDs in series

LED Outputs: ~+80V (ideal) in 2Sx1P configurations.



Schematic

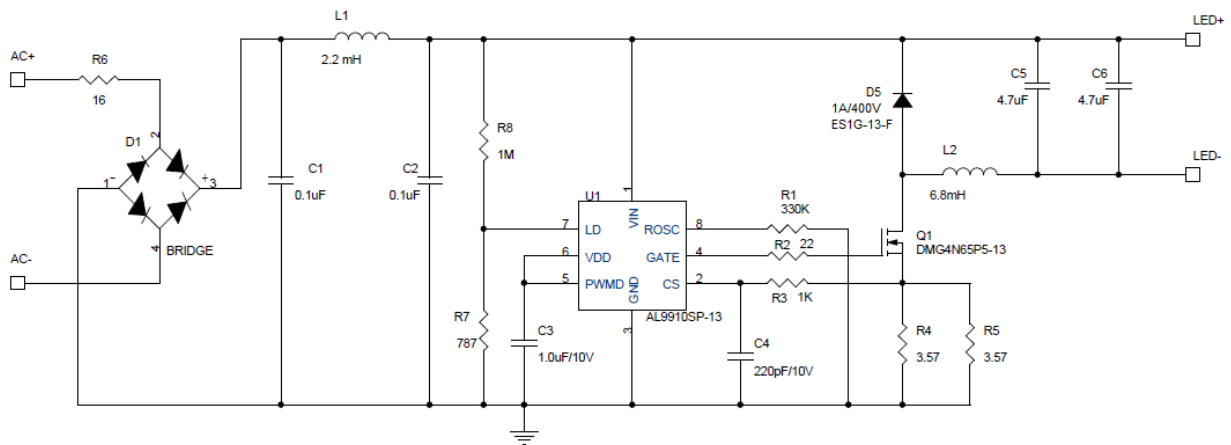
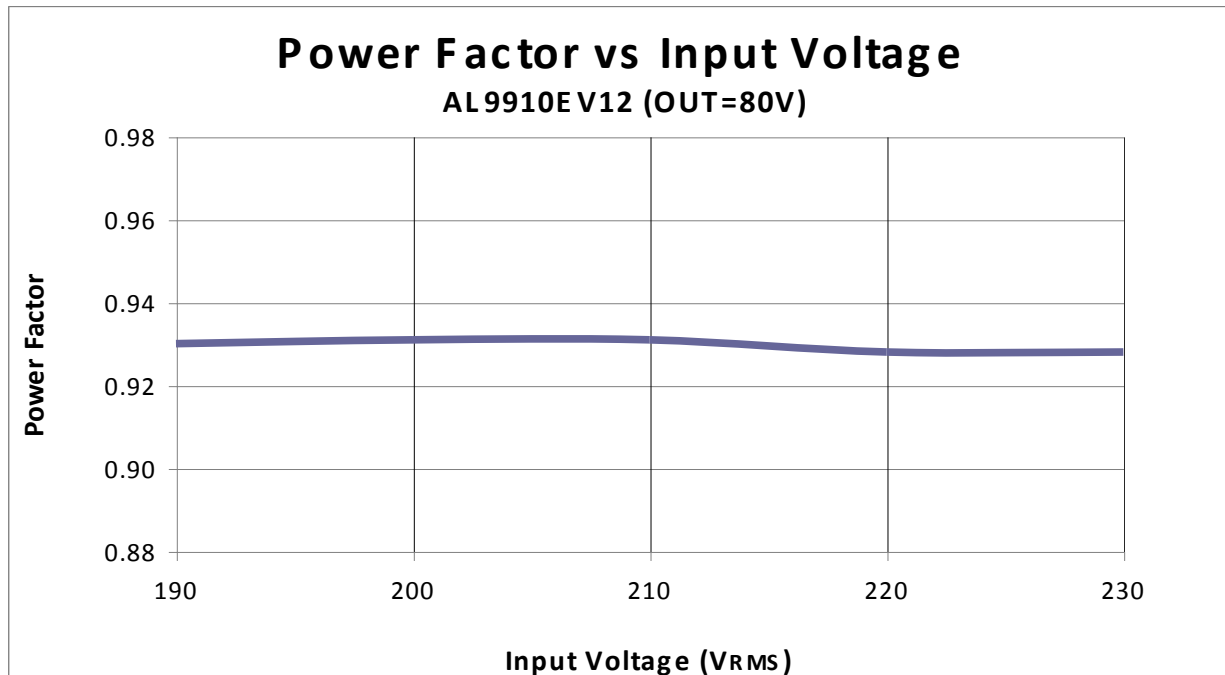
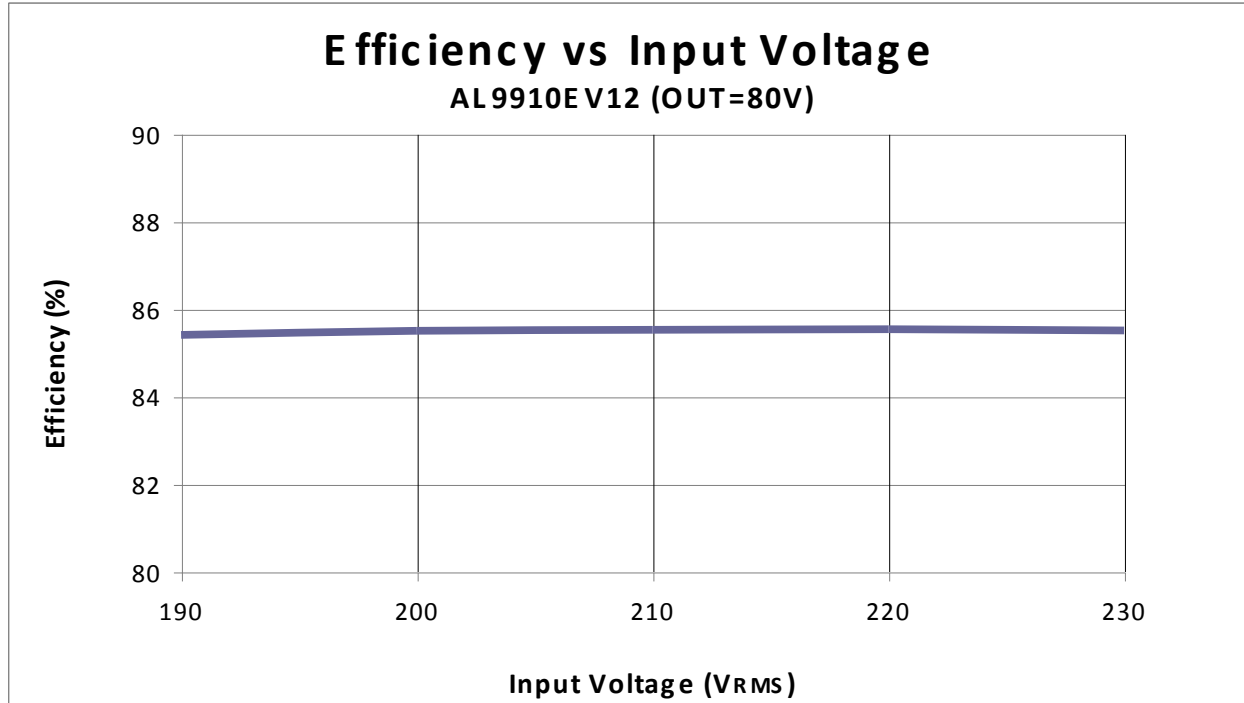


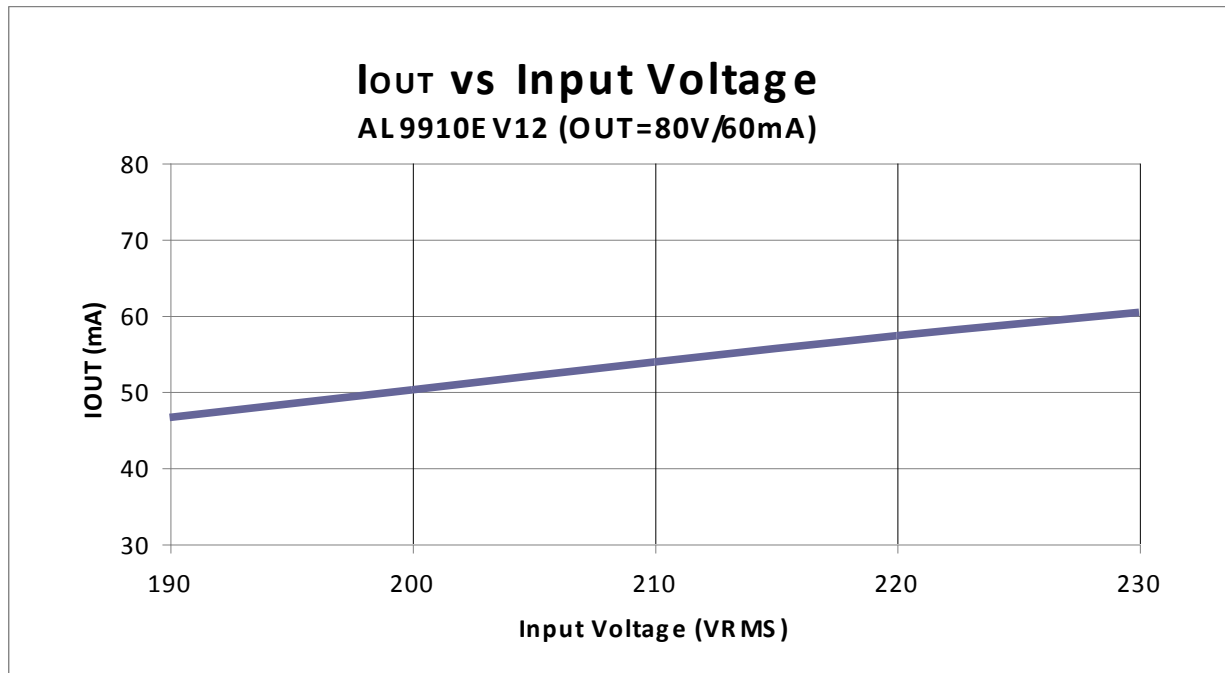
Figure 5: Evaluation Board Schematic

Bill of Material

#	Name	Quantity	Part number	Manufacturer	Description
1	U1	1	AL9910SP-13	Diodes Inc	Universal High Voltage LED Driver in SO-8EP package
2	D1,2,3,4	1	HD06-T	Diodes Inc	RECT BRIDGE GP 600V 0.8A MINIDIP
3	D5	1	ES1G-13-F	Diodes Inc	DIODE SUPER FAST 1A 400V SMA
4	Q1	1	DMG4N65P5-13	Diodes Inc	MOSFET N-CH 650V 4A PowerDI5
5	C1, C2	2	VJ1812Y104KXETW1BC	Vishay	CAP Multilayer Ceramic (MLCC) - SMD/SMT 1812 0.1μF 500V X7R 10%
6	C3	1	C1608X7R1A105K	TDK	CAP CER 1.0μF 10V X7R 0603
7	C4	1	C0402X7R1A221K	Vishay	CAP CER 220pF 10V X7R 01005
8	C5	1	C3225X7S2A475K	TDK	CAP CER 4.7μF, 100V 10% 1210
9	C6	1	C3225X7S2A475K	TDK	CAP CER 4.7μF, 100V 10% 1210
10	R1	1	CRCW0402330KFKTD	Vishay	RES 330KΩ 1/16W 1% 0402 SMD
11	R2	1	CRCW040222R0FKED	Vishay	RES 22.0Ω 1/16W 1% 0402 SMD
12	R3	1	CRCW04021K00FKED	Vishay	RES 1.0KΩ 1/16W 1% 0402 SMD
13	R4	1	CRCW08053R57FKEA	Vishay	RES 3.57Ω 1/8W 1% 0805 SMD
14	R5	1	CRCW08053R57FKEA	Vishay	RES 3.57Ω 1/8W 1% 0805 SMD
15	R6	1	CRCW120616R0FKEA	Vishay	RES 16.0Ω 1/4W 1% 1206 SMD
16	R7	1	CRCW0402787RFKED	Vishay	RES 787Ω 1/16W 1% 0402 SMD
17	R8	1	CRCW12061M00JNEA	Vishay	RES 1MΩ 1/4W 5% 1206 SMD
18	L1	1	LPS5015-225ML	Coilcraft	IND 2.2mH 64mA
19	L2	1	13R685C	Murata	IND Radial 6.8mH 0.13A

Evaluation Board Functional Performance





IMPORTANT NOTICE

DIODES INCORPORATED MAKES NO WARRANTY OF ANY KIND, EXPRESS OR IMPLIED, WITH REGARDS TO THIS DOCUMENT, INCLUDING, BUT NOT LIMITED TO, THE IMPLIED WARRANTIES OF MERCHANTABILITY AND FITNESS FOR A PARTICULAR PURPOSE (AND THEIR EQUIVALENTS UNDER THE LAWS OF ANY JURISDICTION).

Diodes Incorporated and its subsidiaries reserve the right to make modifications, enhancements, improvements, corrections or other changes without further notice to this document and any product described herein. Diodes Incorporated does not assume any liability arising out of the application or use of this document or any product described herein; neither does Diodes Incorporated convey any license under its patent or trademark rights, nor the rights of others. Any Customer or user of this document or products described herein in such applications shall assume all risks of such use and will agree to hold Diodes Incorporated and all the companies whose products are represented on Diodes Incorporated website, harmless against all damages.

Diodes Incorporated does not warrant or accept any liability whatsoever in respect of any products purchased through unauthorized sales channel.

Should Customers purchase or use Diodes Incorporated products for any unintended or unauthorized application, Customers shall indemnify and hold Diodes Incorporated and its representatives harmless against all claims, damages, expenses, and attorney fees arising out of, directly or indirectly, any claim of personal injury or death associated with such unintended or unauthorized application.

Products described herein may be covered by one or more United States, international or foreign patents pending. Product names and markings noted herein may also be covered by one or more United States, international or foreign trademarks.

LIFE SUPPORT

Diodes Incorporated products are specifically not authorized for use as critical components in life support devices or systems without the express written approval of the Chief Executive Officer of Diodes Incorporated. As used herein:

A. Life support devices or systems are devices or systems which:

1. are intended to implant into the body, or

2. support or sustain life and whose failure to perform when properly used in accordance with instructions for use provided in the labeling can be reasonably expected to result in significant injury to the user.

B. A critical component is any component in a life support device or system whose failure to perform can be reasonably expected to cause the failure of the life support device or to affect its safety or effectiveness.

Customers represent that they have all necessary expertise in the safety and regulatory ramifications of their life support devices or systems, and acknowledge and agree that they are solely responsible for all legal, regulatory and safety-related requirements concerning their products and any use of Diodes Incorporated products in such safety-critical, life support devices or systems, notwithstanding any devices- or systems-related information or support that may be provided by Diodes Incorporated. Further, Customers must fully indemnify Diodes Incorporated and its representatives against any damages arising out of the use of Diodes Incorporated products in such safety-critical, life support devices or systems.

Copyright © 2012, Diodes Incorporated

www.diodes.com